

Foxhall



Estate Agents

625 Foxhall Road
Ipswich IP3 8ND

Unit 4, Ropes Drive
Kesgrave IP5 2FU

01473 721133

01473 613296

info@foxhallestateagents.co.uk

www.foxhallestateagents.co.uk



Elliott Street

Close to Town Centre, Ipswich, IP1 2HN

Asking price £135,000



3



1



2



D



Elliott Street

Close to Town Centre, Ipswich, IP1 2HN

Asking price £135,000



Lounge

10'10" x 10'9" (3.30m x 3.28m)

Entrance door into the lounge, double glazed window to front, night storage heater and door to dining room.

Dining Room

10'10" x 10'9" (3.30m x 3.28m)

Slimline electric heater, tiled fire surround, double glazed window to rear, door to stairs and door to the kitchen.

Kitchen

11'0" x 6'8" (3.35m x 2.03m)

Comprising single drainer stainless steel sink unit with cupboard and appliance space under, roll-top worksurfaces with cupboards and appliance space under, wall mounted cupboard over, shelving, double glazed window to side, under stairs storage cupboard, obscure double glazed door to outside and door to the rear lobby.

Rear Lobby

Tiled flooring and door to the bathroom.

Bathroom

8'1" x 6'7" (2.46m x 2.01m)

Panel bath, pedestal wash hand basin, low-level W.C., tiled flooring, electric wall mounted heater (not tested) and obscure double glazed window to side.

Landing

Access to the loft and doors to all bedrooms.

Bedroom One

10'10" x 9'8" (3.30m x 2.95m)

Double glazed window to front, electric slimline heater and built-in wardrobe.

Bedroom Two

10'10" x 6'0" (3.30m x 1.83m)

Double glazed window to rear, electric slimline heater,

laminated style flooring and built-in airing cupboard housing the hot water tank.

Bedroom Three

8'0" x 6'8" (2.44m x 2.03m)

Double glazed window to rear, laminated style flooring and a night storage heater.

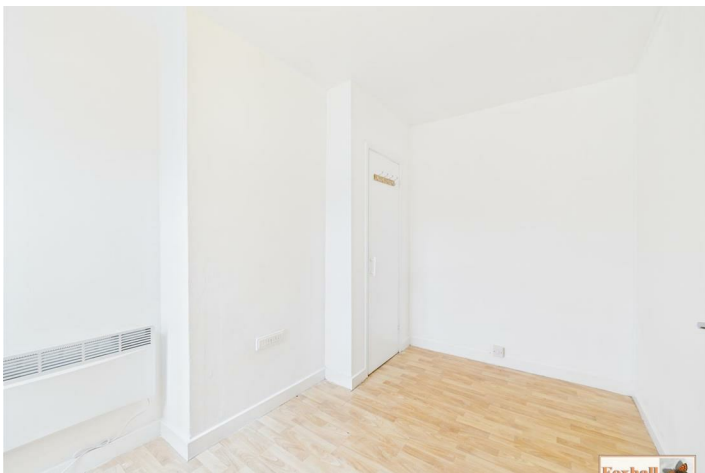
Rear Garden

Enclosed by timber fencing and paved with an easterly aspect.

Agents Notes

Tenure - Freehold

Council Tax Band - A



Road Map



Hybrid Map



Terrain Map



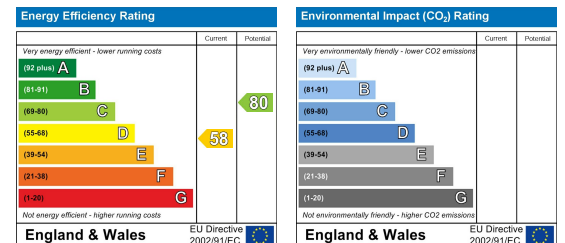
Floor Plan



Viewing

Please contact us on 01473 721133 if you wish to arrange a viewing appointment for this property or require further information.

Energy Efficiency Graph



These particulars, whilst believed to be accurate are set out as a general outline only for guidance and do not constitute any part of an offer or contract. Intending purchasers should not rely on them as statements of representation of fact, but must satisfy themselves by inspection or otherwise as to their accuracy. No person in this firm's employment has the authority to make or give any representation or warranty in respect of the property.